

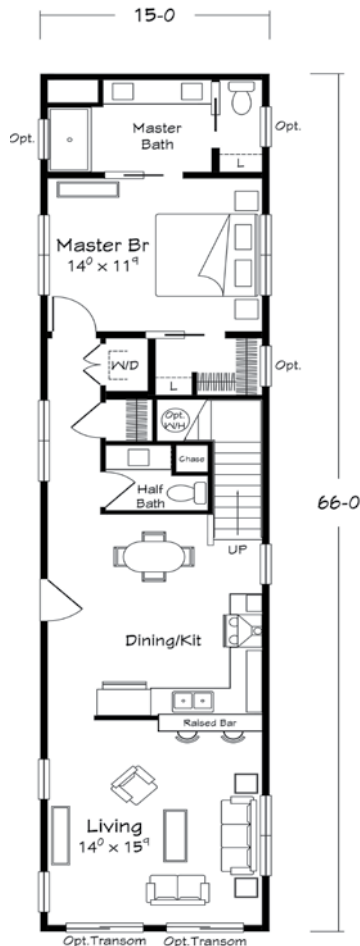
# MODERN LIVING SERIES

## AXIOS TWO STORY

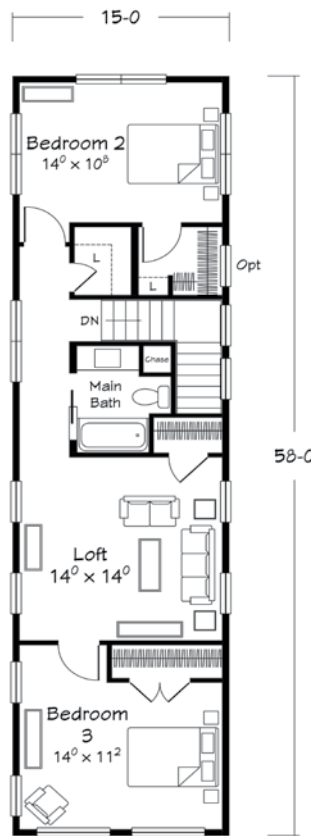


Shown with site added breezeway, garage and front porch

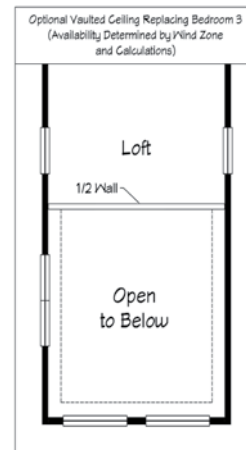
3 bedrooms and 2.5 baths  
1,860 SQ. FT.  
Shed Roof



First Floor



Second Floor



Artists renderings depict buildings as can be built on a typical site. Rendering may include optional or site installed features. Refer to Ritz-Craft's Modern Living Benchmark Series Specifications for standard included features.

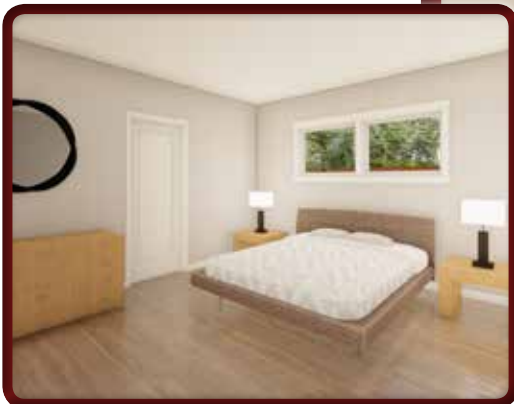


## AXIOS TWO STORY



- Large galley style kitchen with island/bar
- Open floorplan with kitchen open to adjacent dining and living areas
- Optional vaulted ceiling over Living Room

- Nicely sized bedrooms with plenty of closet space
- Large master bedroom with private bath featuring double bowl vanities and 60" shower base with tiled walls
- Toilet/linen compartment with pocket door in master bath



# MODERN LIVING SERIES

## JASMINE TWO STORY



Shown with site added breezeway, garage and suspended entry roof.

3 bedrooms and 3 baths  
2,140 SQ. FT.  
3/12 & 4/12 Sawtooth Roof



First Floor

Artists renderings depict buildings as can be built on a typical site. Rendering may include optional or site installed features. Refer to Ritz-Craft's Modern Living Benchmark Series Specifications for standard included features.

## JASMINE TWO STORY



- Large galley style kitchen with island/bar
- Open floorplan with kitchen open to adjacent dining and living areas
- Large family room with sliding patio door
- All family areas face the rear yard

- Three full baths
- Nicely sized bedrooms with plenty of closet space
- Large master bedroom with private bath featuring double bowl vanities, private toilet area and 60" shower base with tiled walls
- Upper level study



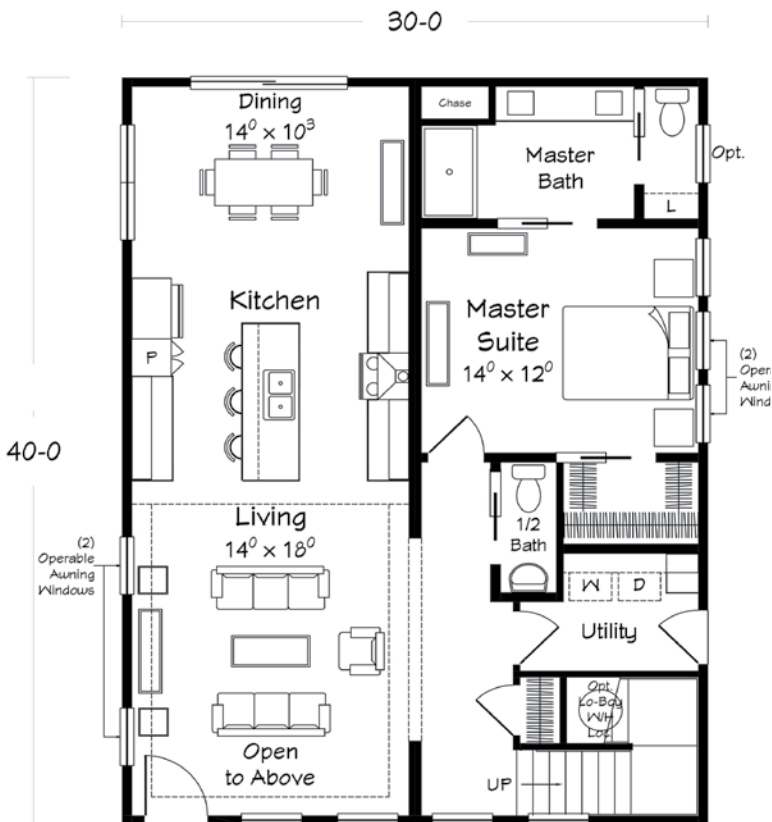
# MODERN LIVING SERIES

## ARIES TWO STORY

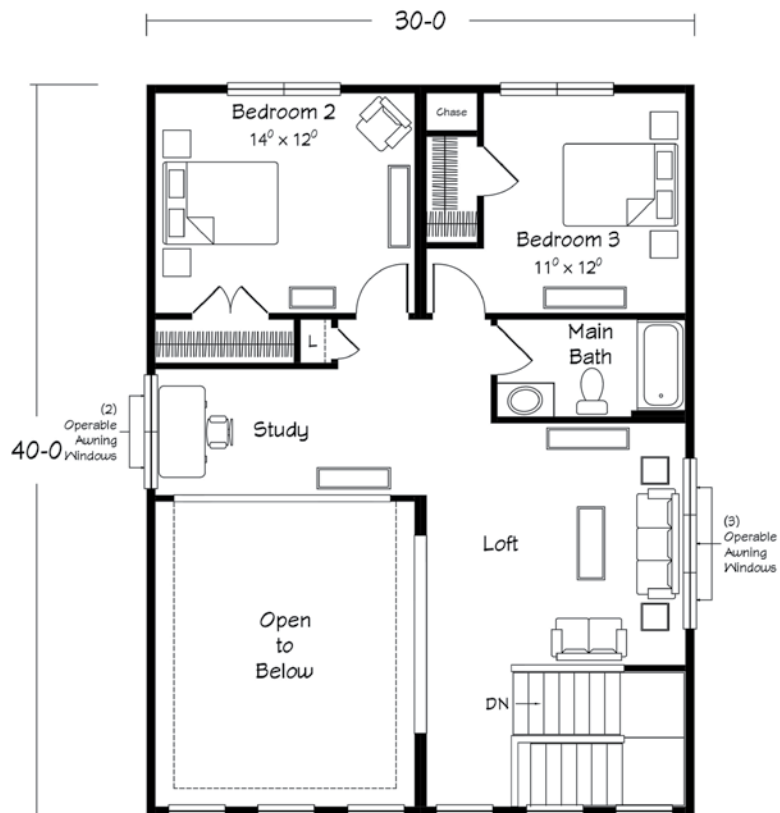


3 bedrooms and 2.5 baths • 2,148 SQ. FT.

3/12/4.5/12 sawtooth roof pitch; vaulted ceilings in Living Room. Open loft style floorplan.



First Floor



Second Floor

Artists renderings depict buildings as can be built on a typical site. Rendering may include optional or site installed features. Refer to Ritz-Craft's Modern Living Benchmark Series Specifications for standard included features.

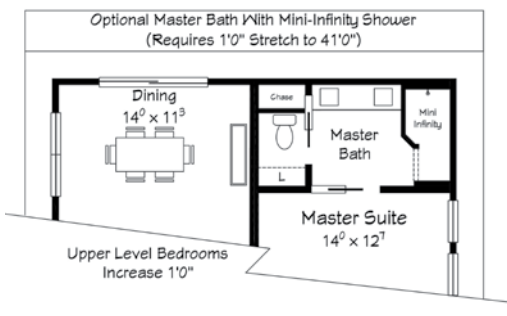


# ARIES TWO STORY



- 2-Story vaulted ceiling in Living Room
- Large galley style kitchen with island/bar
- Open floorplan with kitchen open to adjacent dining and living areas
- All family areas face the rear yard

- Nicely sized bedrooms with plenty of closet space
- Large master bedroom with private bath featuring double bowl vanities, private toilet area and 60" shower base with tiled walls

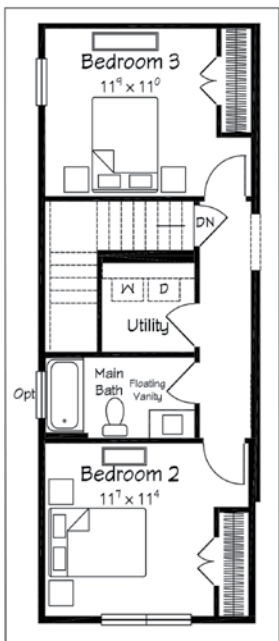


# MODERN LIVING SERIES

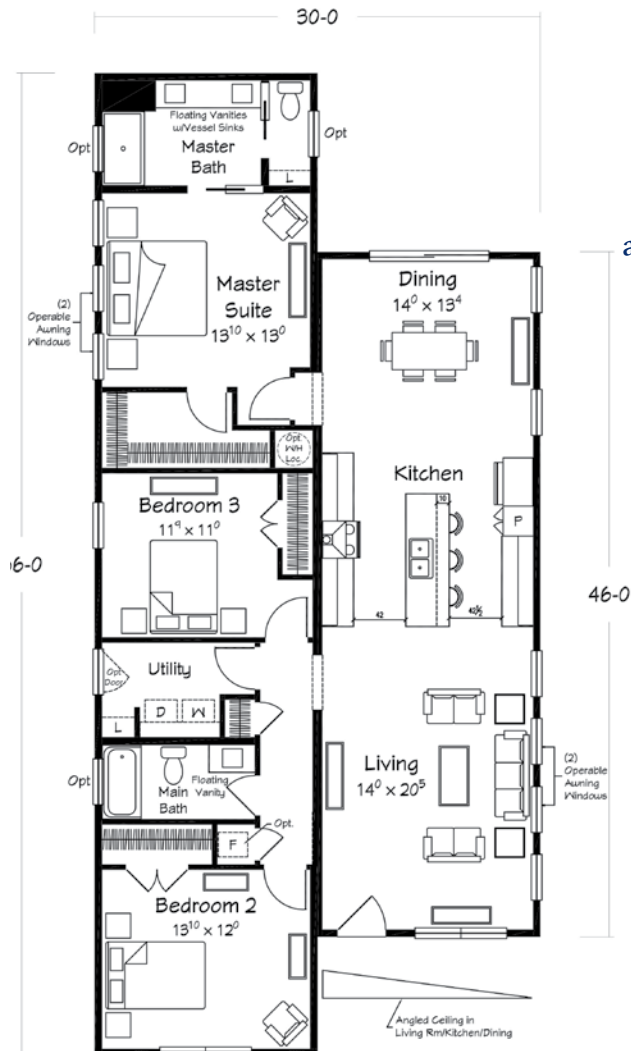
## JADE TREE RANCH



Shown with site added suspended entry roof.



Jade Tree  
Basement Option



3 bedrooms and 2 baths  
1,680 SQ. FT.

3/12/4.5/12 sawtooth roof pitch  
Angled ceilings in Living Room, Kitchen  
and Dining Room to add volume and style



Artists renderings depict buildings as can be built on a typical site. Rendering may include optional or site installed features. Refer to Ritz-Craft's Modern Living Benchmark Series Specifications for standard included features.

# JADE TREE RANCH



- Large galley style kitchen with island/bar
- Open floorplan with kitchen open to adjacent dining and living areas
- All family areas face the rear yard
- Angled ceiling with additional open wall cabinets on range side

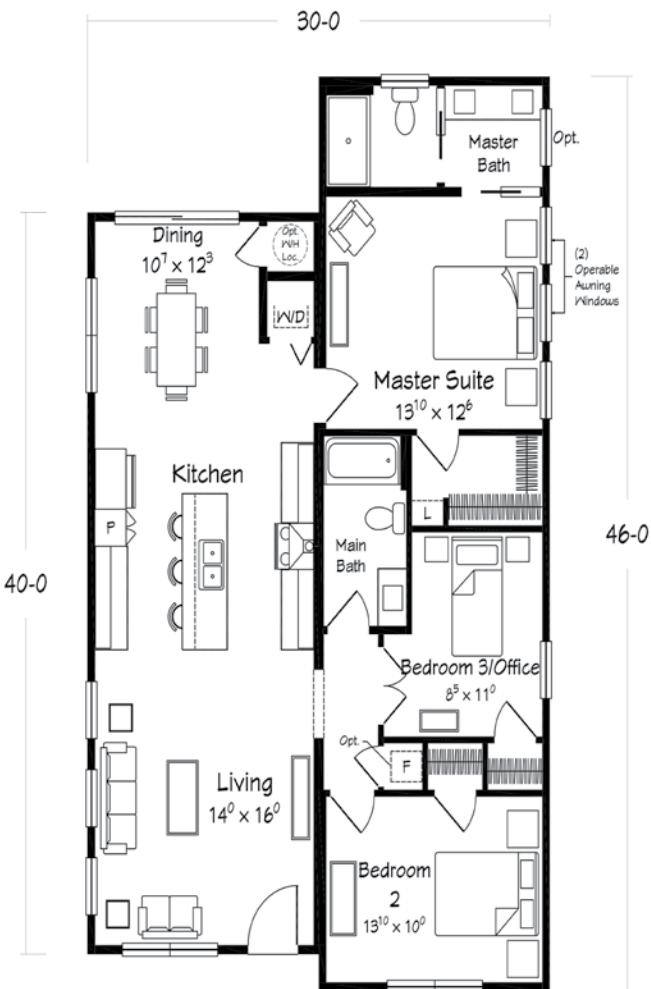
- Nicely sized bedrooms with plenty of closet space
- Large master bedroom with private bath featuring double bowl vanities and 60" shower base with tiled walls
- Toilet/linen compartment with pocket door in master bath





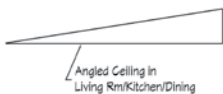
# MODERN LIVING SERIES

## ACCENT RANCH



3 bedrooms and 2 baths  
1,290 SQ. FT.

3/12/4.5/12 sawtooth roof pitch; angled ceilings in Living Room, Kitchen and Dining Room to add volume and style



Artists renderings depict buildings as can be built on a typical site. Rendering may include optional or site installed features. Refer to Ritz-Craft's Modern Living Benchmark Series Specifications for standard included features.

## ACCENT RANCH



- Angled ceilings throughout Living, Kitchen and Dining
- Large galley style kitchen with island/bar
- Open floorplan with kitchen open to adjacent dining and living areas
- All family areas face the rear yard

- Nicely sized bedrooms with plenty of closet space
- Large master bedroom with private bath featuring double bowl vanities and compartmented toilet/shower
- 60" shower base with tiled walls in master bath



New  
**PLAN OF THE MONTH:** *November 2023*



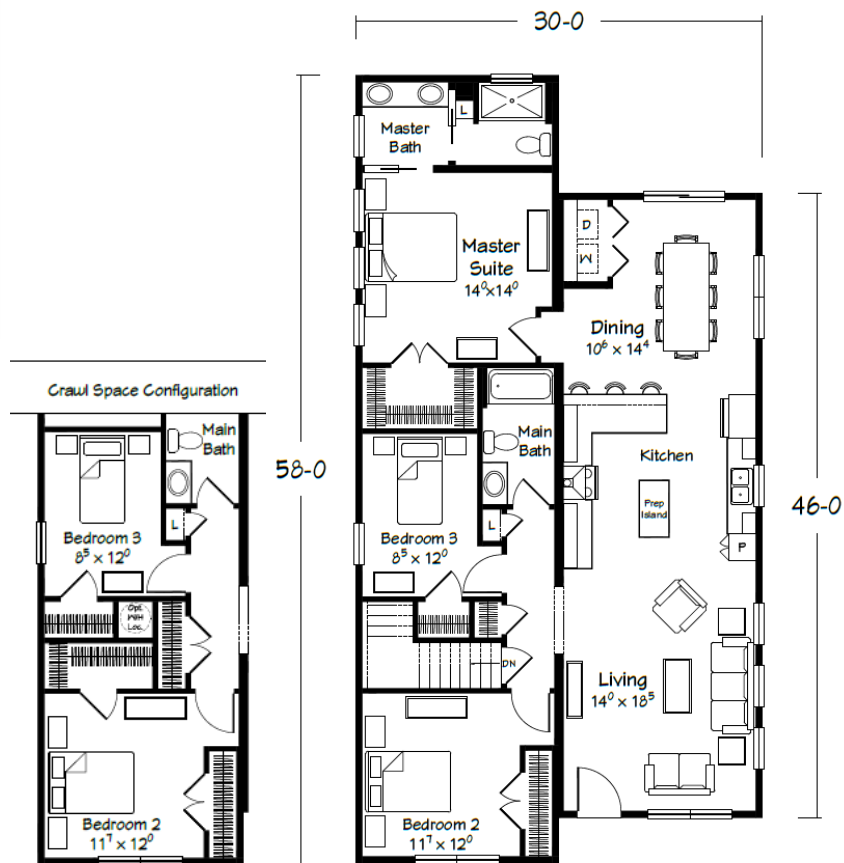
Scan QR for  
Interior Views

**PLAN NAME:** Accent II Ranch

**PLAN INFO:** 1560 sq. ft | 3 Bedrooms | 2 Baths

**DESCRIPTION:** Modern Ranch Plan

**COLLECTION/SPECIFICATIONS:** Modern Living



Accent II Ranch  
1560 sq ft Living

New

# PLAN OF THE MONTH: December 2023



Shown with site built entry covering and garage



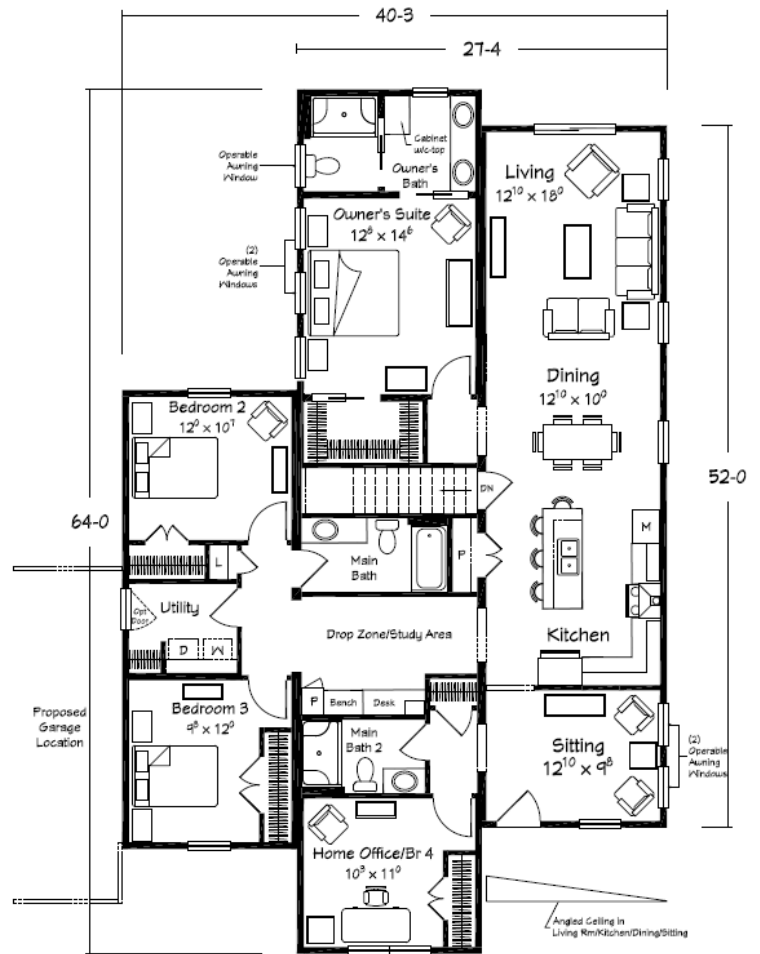
Scan QR for Interior Views

**PLAN NAME:** Atlas Ranch

**PLAN INFO:** 2025 sq. ft | 4 Bedrooms | 3 Baths

**DESCRIPTION:** Modern Ranch Plan

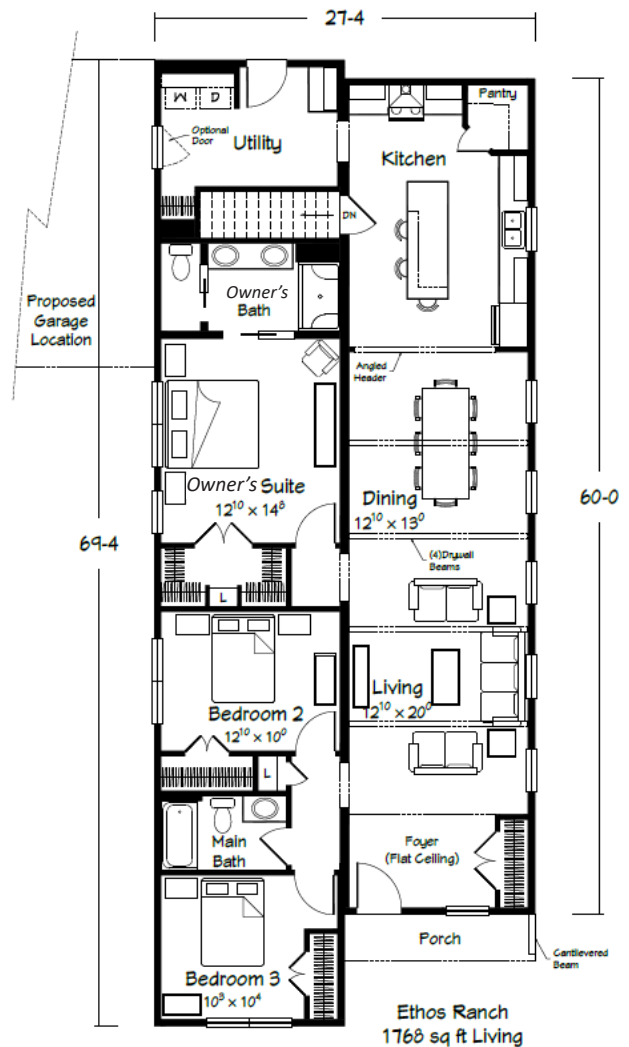
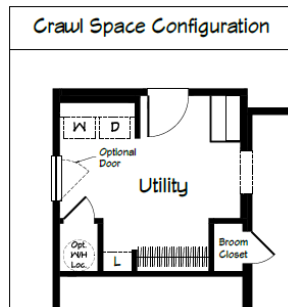
**COLLECTION/SPECIFICATIONS:** Modern Living



Atlas Ranch  
2025 sq ft Living

New

# PLAN OF THE MONTH: February 2024



**PLAN NAME:** Ethos Ranch

**PLAN INFO:** 1768 sq. ft  
3 Bedrooms | 2 Baths

**DESCRIPTION:** Ranch

**COLLECTION:** Modern Living

Scan QR for  
Interior Views



Ethos Ranch  
1768 sq ft Living

# New PLAN OF THE MONTH: *March 2024*



**Ritz-Craft**  
Custom Building Simplified

Shown with site-built breezeway and garage.

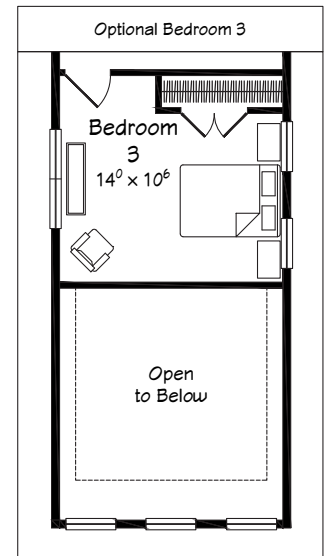
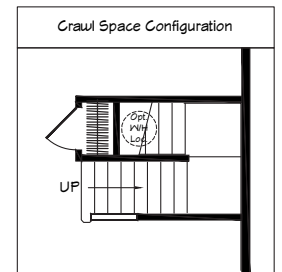
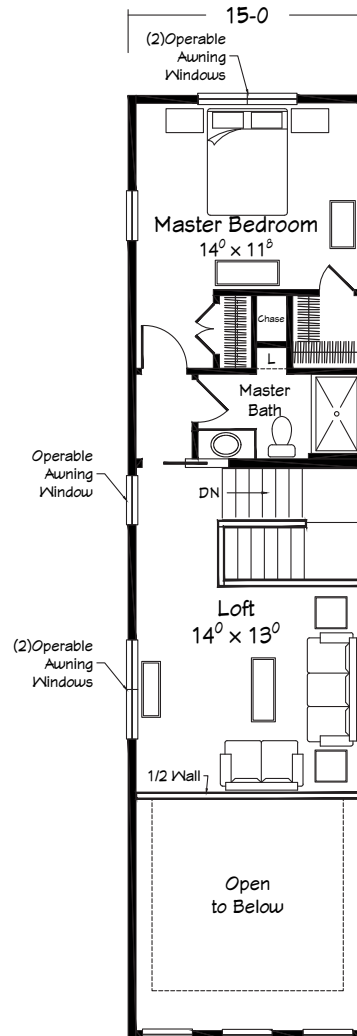
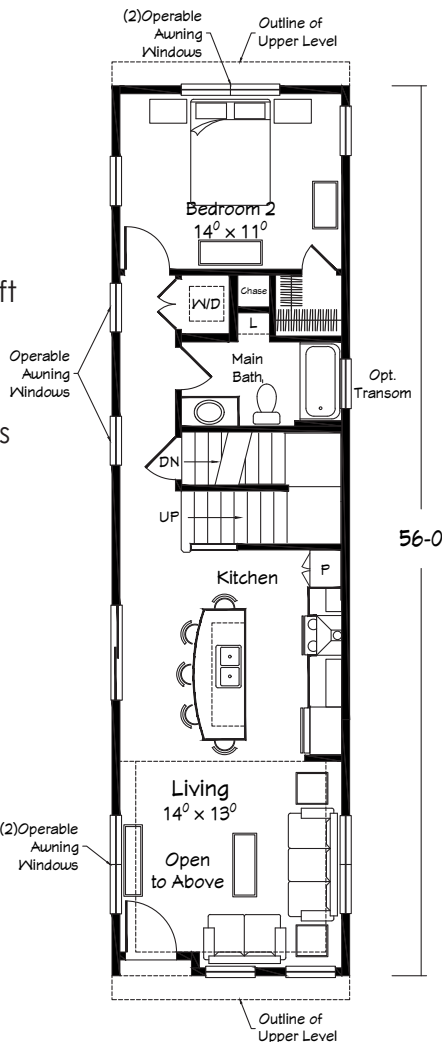
First Floor  
838 sq. ft.

Second Floor  
662 sq. ft.

**PLAN NAME:**  
Argos Two Story

**PLAN INFO:**  
1500 sq. ft  
2 Bedrooms with Loft  
2 Baths

**COLLECTION:**  
Modern Living Series



Scan QR for Interior Views

