



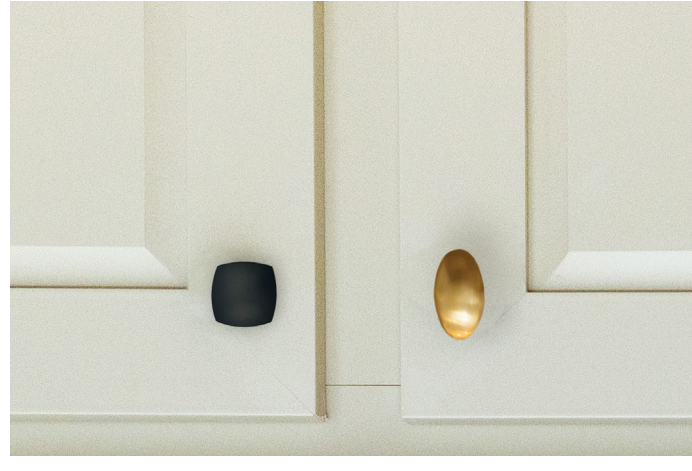
Formica Laminate Countertops

Top: Ouro Bronco
Bottom: Terrena Soapstone



Flooring

Carpet: Shaw Weathered New Weave
Carpet available only in multi-sections
Linoleum: LUX Natural Oak #311



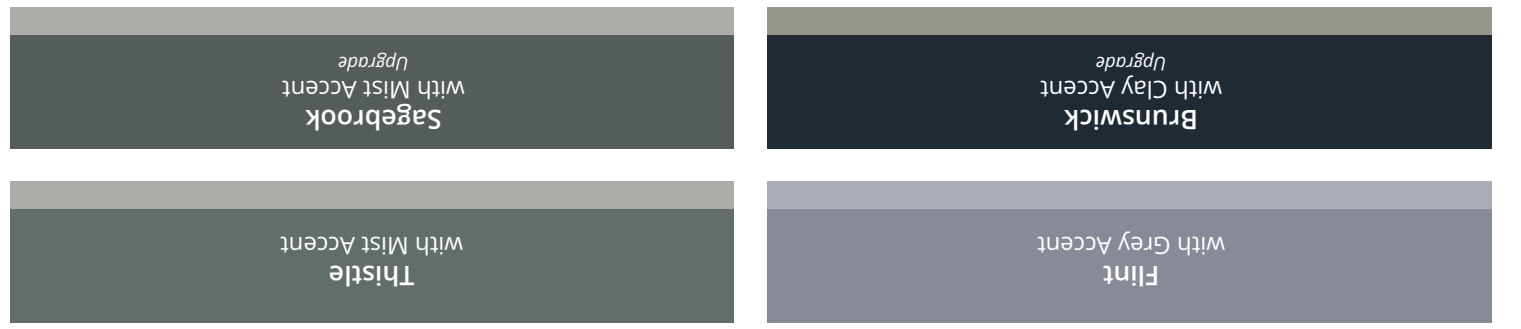
Cabinet Knobs

Left: Brushed Brass Square Knob
Right: Matte Black Square Knob



DuraCraft® Cabinet Studio Beige Package

Onyx Shaker Frame Cabinets Kitchen Island Cabinets
Studio Beige Shaker Frame Cabinets Primary Kitchen and Bathroom Cabinets



Exterior Color Packages Upgrade Colors Only Available on Multi Section Homes

Tempo

Tempo CRANK IT UP

Tempo Specs & Options

SPECS

- 8' Smooth Ceilings
- 2"x 6" Exterior Walls (Forced Option)
- Mateline Close Up Beam
- DuraCraft® Cabinets (Feat. 42" Overheads)
- LED Recessed Can Lights Throughout
- 60" Fiberglass Shower in Primary Bath (VBP)
- Furniture Style Vanity in Primary Bath
- Stile Framed Mirrors in Bathrooms
- 36" Stainless Steel European Range Hood
- Frigidaire® Stainless Steel Appliance Package (Feat. 18" Top Freezer, Self Clean Range & Dishwasher)
- Pfister® Faucets Throughout (Feat. Brushed Nickel Pull Down in Kitchen)
- 4" Laminate Backsplash
- Two Exterior Faucets & Two Exterior Recepts
- Kwikset® Door Hardware Throughout (Feat. Thumbatch Front Door)
- Craftsman Style Front Door, 9 Lite Rear Door
- 3 Over Clear Windows
- Carrier® Furnace
- ENERGY STAR® Ready*
*Not applicable in all regions (Insulation values vary by region)
- R-27 Floor, R-21 Wall & R-38 Roof Insulation
- ecobee® Smart Thermostat
- Furnace & Water Heater Close-Off Doors
- 5" Base & 3" Window, Door Casing & Cove Craftsman Style Trim
- Carbon Monoxide Detector
- Ceiling Fan prep for LR and all BRs
- Architectural Shingles

Single Section Specific

- Lux® Linoleum Throughout
- 4/12 Roof Pitch
- Door-side & Notched Window Surrounds
- Door Side & Hitch End Elevations

Multi-Section Specific

- 25 oz. Carpet
- Door-side Window Surrounds
- 3/12 Roof Pitch with 14' Dormer

MOD Specs & Additions

- 2" x 10" Floor Joist 16" OC
- R-21 Wall & R-49 Roof Insulation
- 2" x 4" Interior Walls
- 2" x 4" Mateline Wall
- Metal Cross Bridging
- 30# Roof Load
- Vinyl Argon Gas Windows

Satisfaction

4814-21-1 | 2 beds | 2 baths | 632 sq. ft.



Respect

6014-22-1 | 2 beds | 2 baths | 790 sq. ft.



Good Vibrations

6614-32-1 | 3 beds | 2 baths | 869 sq. ft.



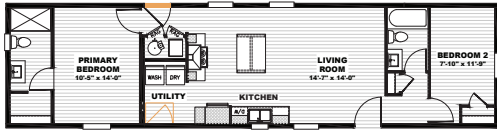
Layla

5216-21-1 | 2 beds | 1 bath | 780 sq. ft.



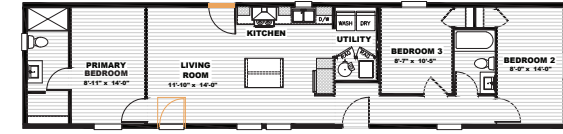
Born to Run

6016-22-1 | 2 beds | 2 baths | 900 sq. ft.



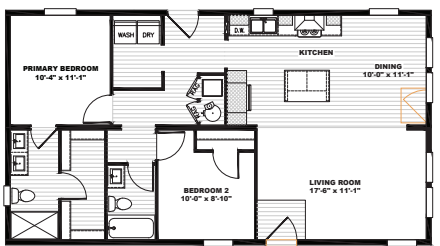
Rhythm Nation

6616-32-1 | 3 beds | 2 baths | 990 sq. ft.



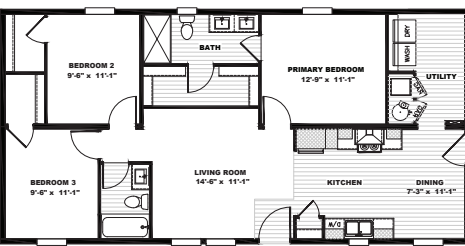
Rising Sun

4424-22-1 | 5 beds | 2 baths | 1,041 sq. ft.



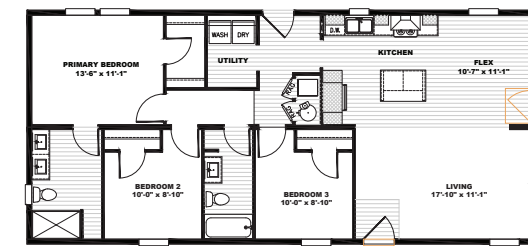
Here Comes The Sun

4824-32-1 | 3 beds | 2 baths | 1,136 sq. ft.



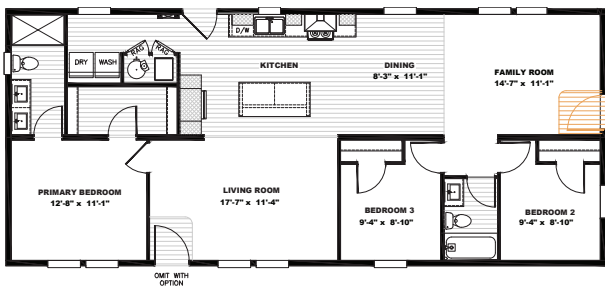
Three Little Birds

5224-32-1 | 3 beds | 2 baths | 1,230 sq. ft.



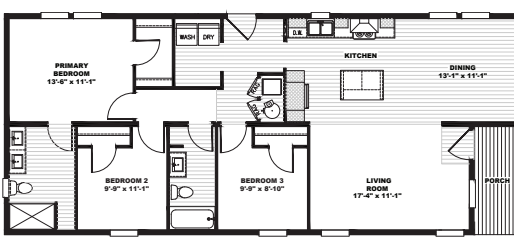
My Girl

5624-32-1 | 3 beds | 2 baths | 1,326 sq. ft.



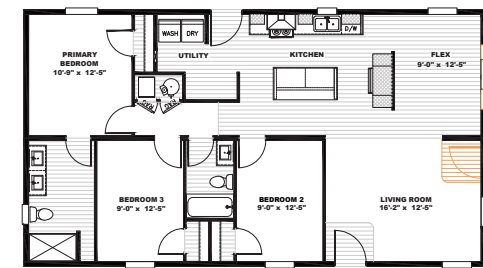
Whole Lotta Love

5624-32-2 | 3 beds | 2 baths | 1,325 sq. ft.



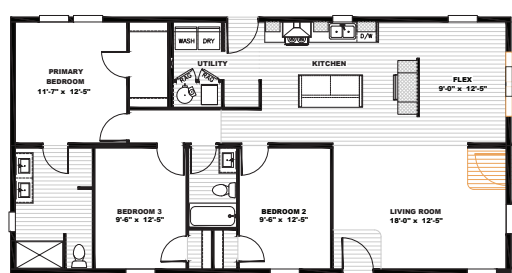
Under Pressure

4828-32-1 | 3 beds | 2 baths | 1,264 sq. ft.



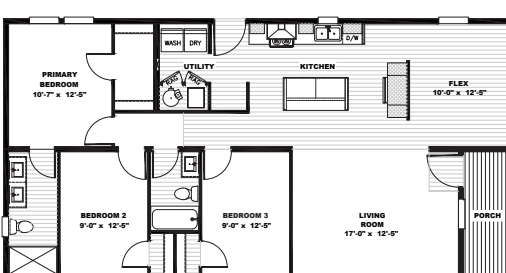
Free Bird

5228-32-1 | 3 beds | 2 baths | 1,369 sq. ft.



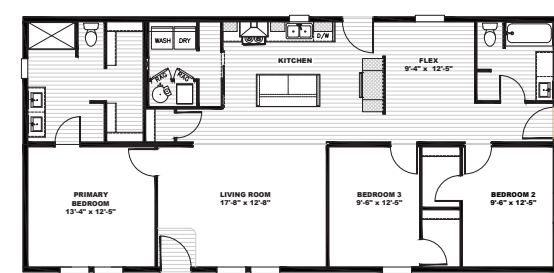
Johnny B Goode

5228-32-2 | 3 beds | 2 baths | 1,369 sq. ft.



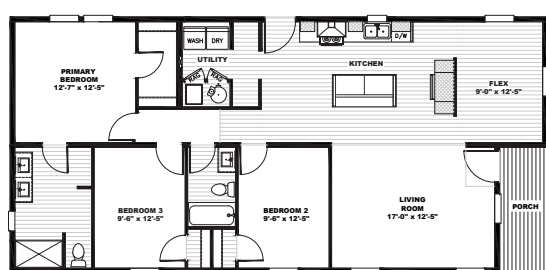
Let It Be

5628-32-1 | 3 beds | 2 baths | 1,475 sq. ft.



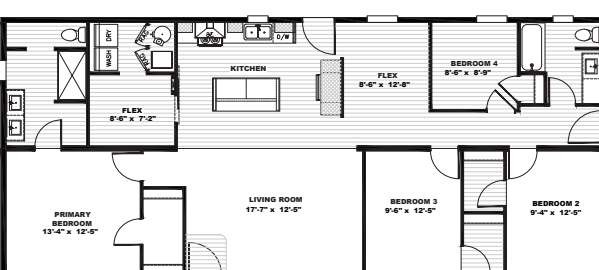
Stayin Alive

5628-32-2 | 2 beds | 2 baths | 1,475 sq. ft.



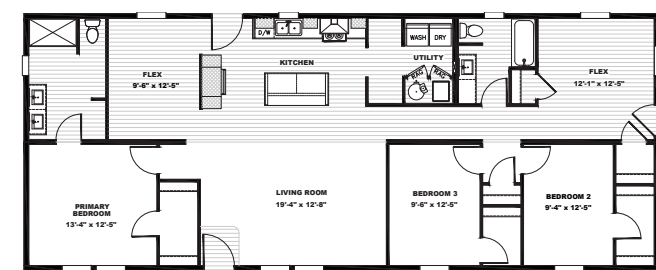
Brown Eyed Girl

6028-42-2 | 4 beds | 2 baths | 1,580 sq. ft.



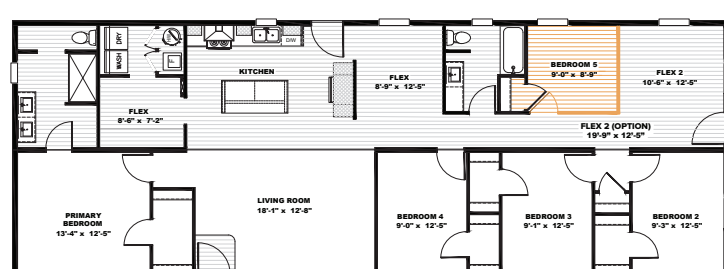
Rocket Man

6628-32-1 | 3 beds | 2 baths | 1,738 sq. ft.



Hey Jude

7228-52-1 | 2 beds | 2 baths | 1,896 sq. ft.



Scan me to see floor plan options and details at www.claytonmiddleburytempo.com

All Multi Section Homes Available as Modular

 Alternate Floorplan Available

The home series, floor plans, photos, renderings, specifications, features, pricing, materials and availability shown will vary by retailer and state, and are subject to change without notice.