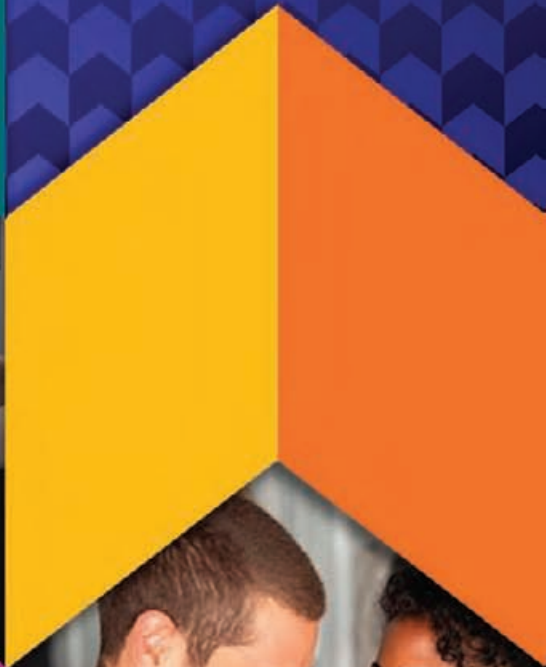


REDMAN  HOMES

ADVANTAGE SERIES



Scan to take our 'Tour of Excellence' - Welcome to Topeka!





ABOUT US

Redman Homes is one of the oldest and most respected homebuilders in America. Founded in 1937, Redman pioneered factory home construction and continues to lead advances in quality control, design and home value today. Through experience and innovation we've harnessed production line efficiency and, paired with our high-quality craftsmanship, created a process that delivers homes that meet our superior standards.

A place to call your own

Beyond just building you a house, we're committed to providing you and your family with a home to make memories in that will last a lifetime. Somewhere you can feel secure. A place you can call your own. A home that fits your lifestyle and has your own personal touch. Whether you're an active young family constantly on the go or empty nesters ready to simplify, just relax

More choice, more freedom

Our vast selection of floor plans, color choices and options give you the freedom to express your personal style and fit your home around your life.

Building the best

We build each and every home to meet or exceed a strict national or state building code, and we set even higher standards for ourselves. Focusing on the things you don't see as well as the things you do, we monitor and inspect our homes at every stage of construction. From the plumbing system to the electrical wiring, from the kitchen cabinets to the closets in the bedrooms – every home we build undergoes rigorous quality inspections to ensure we're providing you with nothing but our best.

The quality you expect

To build the best, we use the best. To meet your expectations of quality - and ours - we use only the highest-quality building materials and trusted national brand names. From insulation and fixtures to flooring and appliances, we only buy components from suppliers who share our commitment to quality. By using the best, we're confident we can build you a home with the lasting value you'll appreciate for years to come. Your housing consultant can tell you more about the specific brands used in our homes.



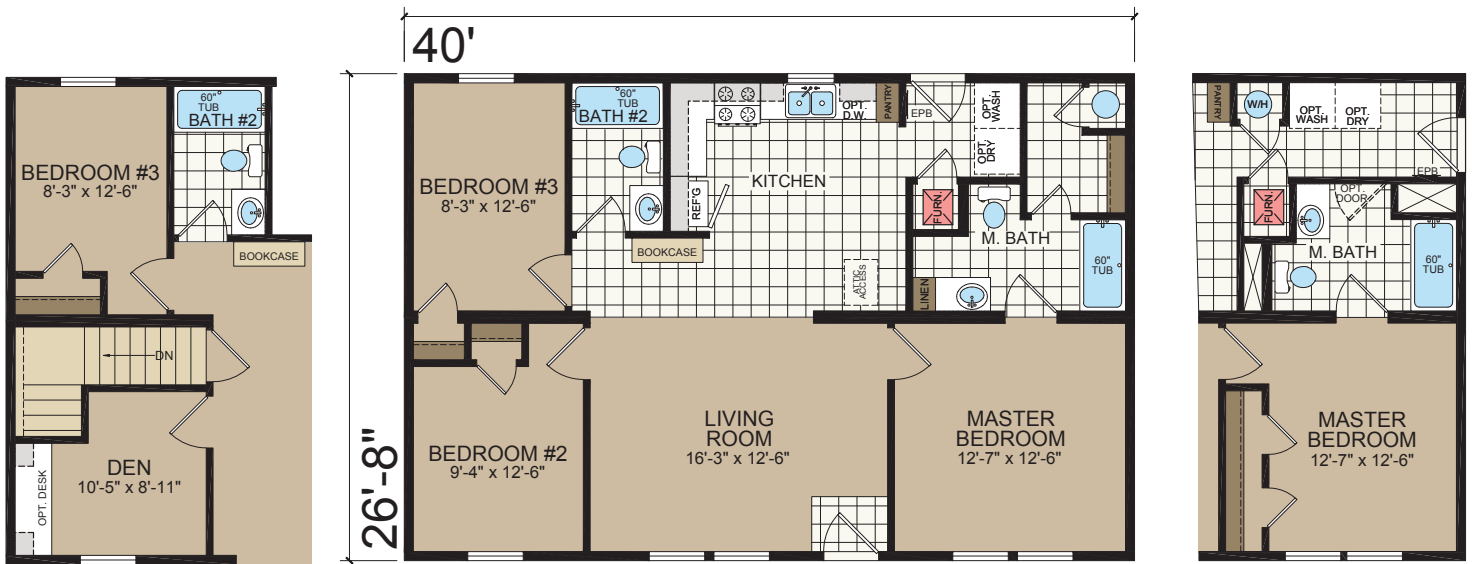
MONROE

2844-201

26'8" x 40' | 3 bed-2 bath | 1067 sq.ft.



Shown with Optional Elevation, Site-built Porch and Garage by Others



OPTIONAL STAIRWELL

Stairwell available on Modular only

OPTIONAL REAR ENTRY



Attic access standard on Modular only

CORONA

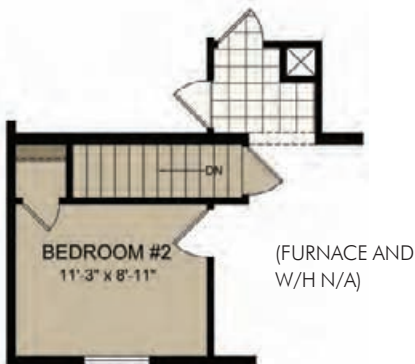
2852-205

26'8" x 48' | 3 bed-2 bath | 1280 sq.ft.



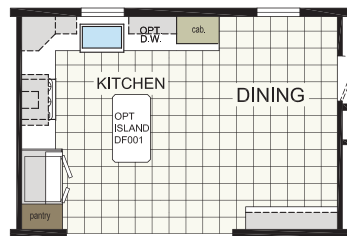
Shown with Optional Exterior

Take a Virtual Tour!



OPTIONAL STAIRWELL

Stairwell available on Modular only

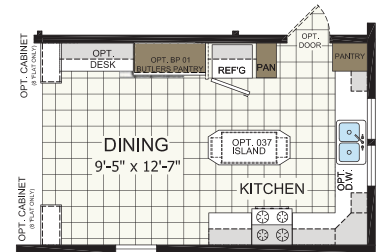
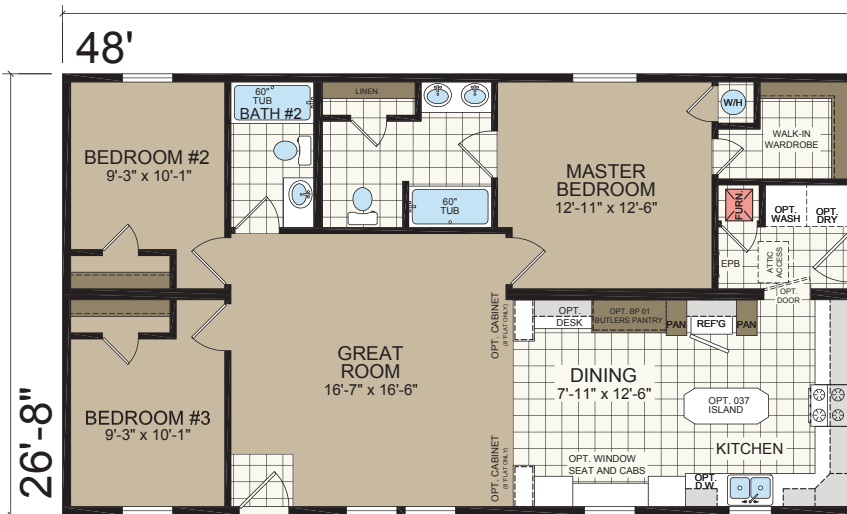


OPTIONAL ULTIMATE KITCHEN 2

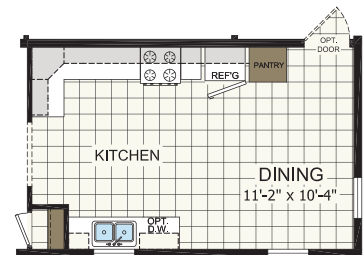
BRIGHTON

2852-215

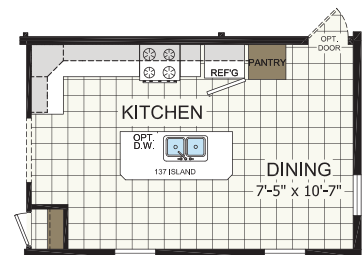
26'8" x 48' | 3 bed-2 bath | 1280 sq.ft.



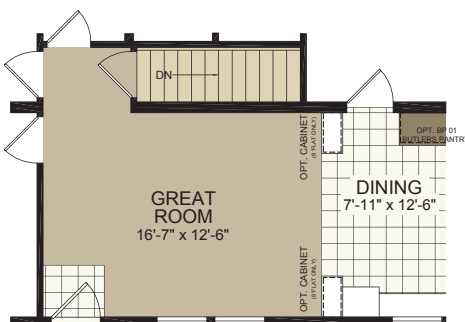
OPTIONAL KITCHEN



OPTIONAL KITCHEN 2

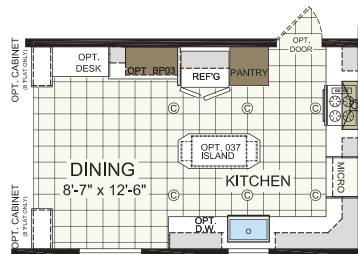


OPTIONAL KITCHEN 3

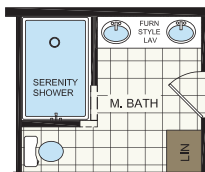


OPTIONAL STAIRWELL

Stairwell available on Modular only



OPTIONAL ULTIMATE KITCHEN 2



OPTIONAL SERENITY BATH

Attic access standard on Modular only



WARREN

2856-201

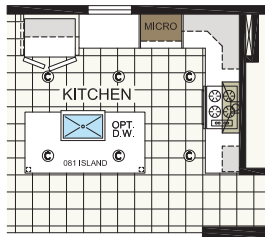
26'8" x 52' | 3 bed-2 bath | 1387 sq.ft.



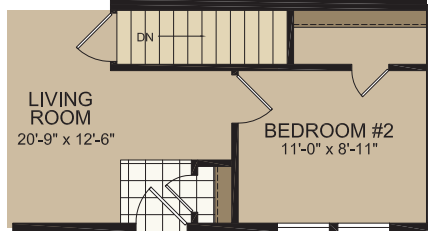
Shown with Optional Elevation, Site-built Porch and Garage by Others



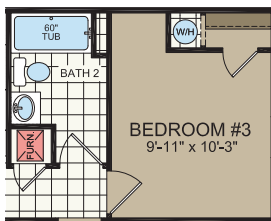
Take a Virtual Tour!



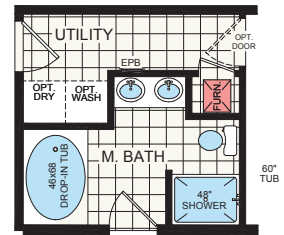
OPTIONAL
ULTIMATE KITCHEN 2



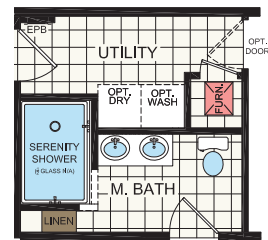
OPTIONAL STAIRWELL
Stairwell available on Modular only



Furnace and water heater
locations for Multi-Section only



OPTIONAL MASTER BATH

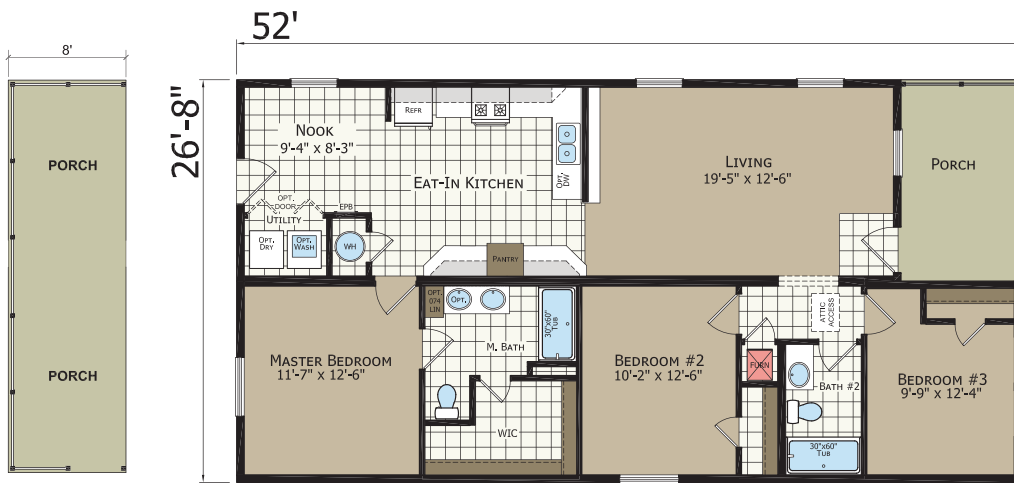


OPTIONAL SERENITY SHOWER

PONTIAC

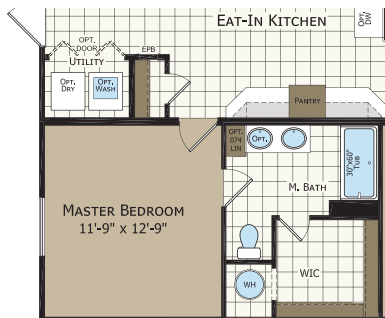
2856-241

26'8" x 52' | 3 bed-2 bath | 1279 sq.ft.

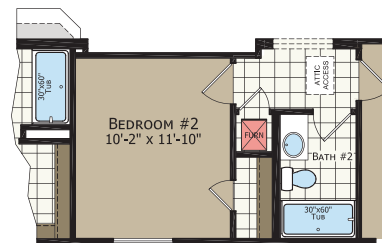


OPTIONAL PORCH

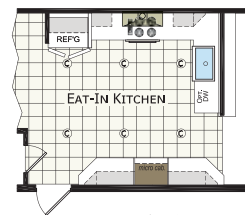
Take a Virtual Tour!



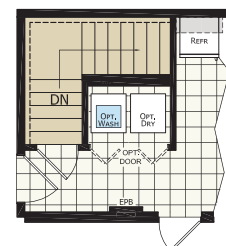
Water heater location for Multi-Section only



OPTIONAL LIVING ROOM OFFSET



OPTIONAL ULTIMATE KITCHEN 2



OPTIONAL STAIRWELL
Stairwell available on Modular only

Attic access standard on Modular only

CAMPBELL

2856-255

26'8" x 52' | 3 bed-2 bath | 1279 sq.ft.



OPTIONAL
ON-SIGHT
AWNING

OPTIONAL
8' PORCH



OPTIONAL
EXTENDED BATH

OPTIONAL KITCHEN

EASTON

2860-249

26'8" x 56' | 3 bed-2 bath | 1493 sq.ft.



Take a Virtual Tour!



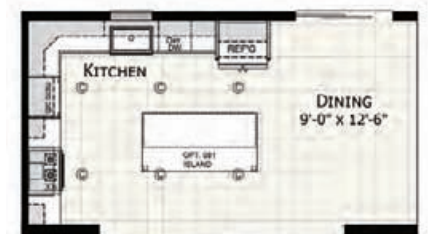
OPTIONAL STAIRWELL
Available on Modular only



OPTIONAL DOUBLE ISLAND



OPTIONAL BOOTH SEAT



**OPTIONAL
ULTIMATE KITCHEN 2**

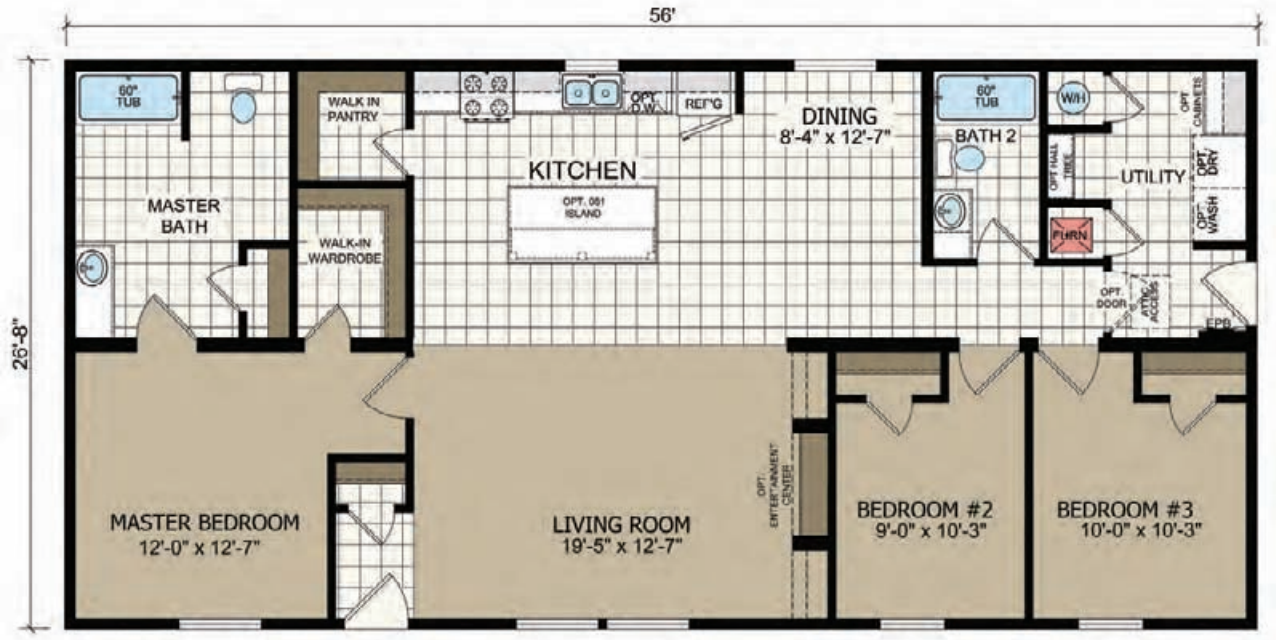


Attic access standard on Modular only

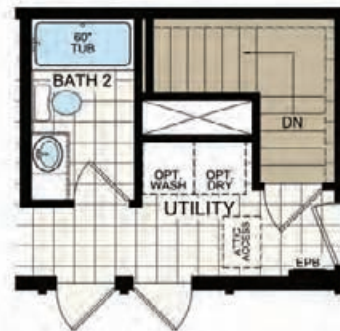
ADDISON

2860-251

26'8" x 56' | 3 bed-2 bath | 1493 sq.ft.



OPTIONAL APEX
MASTER BATH



OPTIONAL STAIRWELL
(FURNACE and WH N/A)

Available on Modular only

BAY PORT

2860-239

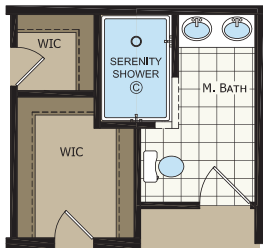
26'8" x 56' | 3 bed-2 bath | 1420 sq.ft.



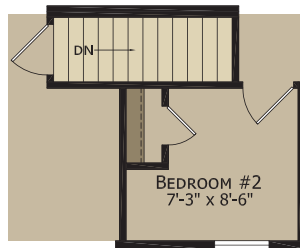
Shown with Optional Elevation



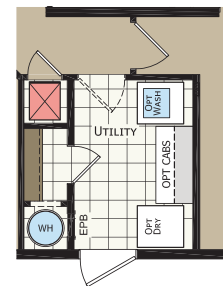
OPTIONAL ULTIMATE KITCHEN 2



OPTIONAL SERENITY BATH



OPTIONAL STAIRWELL



Furnace and water heater locations for Multi-Section only

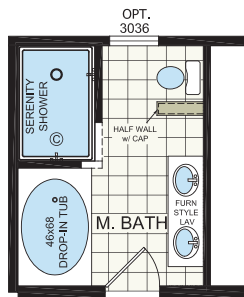
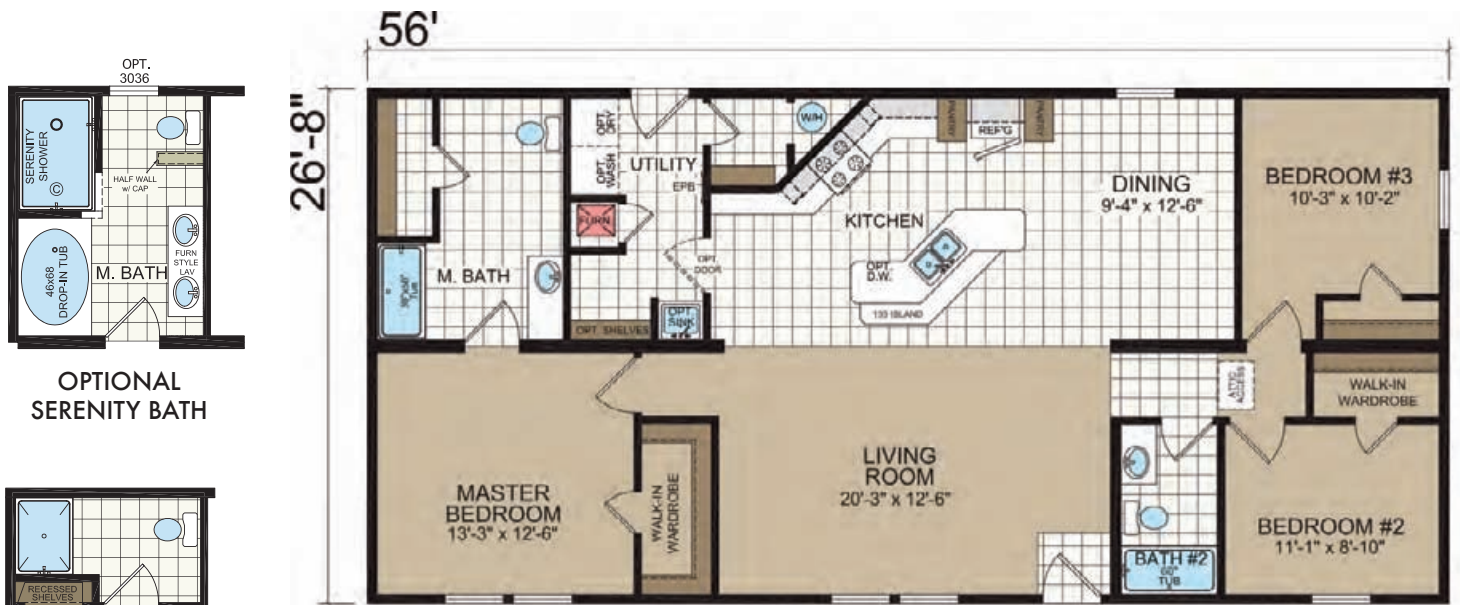
NEWPORT

2860-245

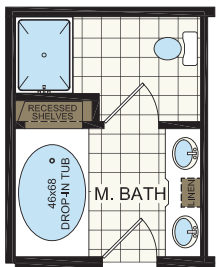
26'8" x 56' | 3 bed-2 bath | 1493 sq.ft.



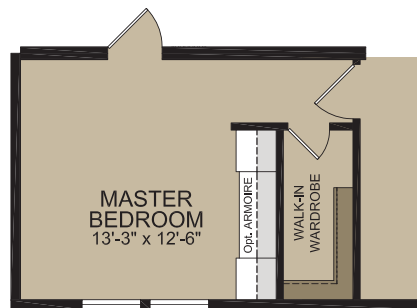
Shown with Optional Elevation and On-Site Porch by Others



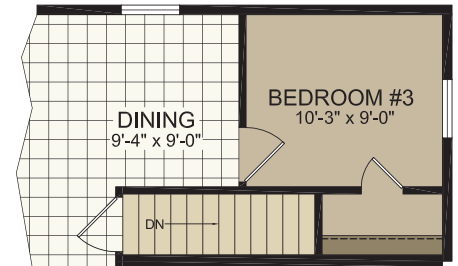
OPTIONAL SERENITY BATH



OPTIONAL MASTER BATH



OPTIONAL MASTER BEDROOM



OPTIONAL STAIRWELL

Stairwell available on Modular only

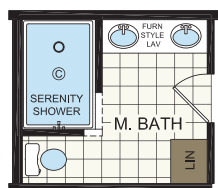
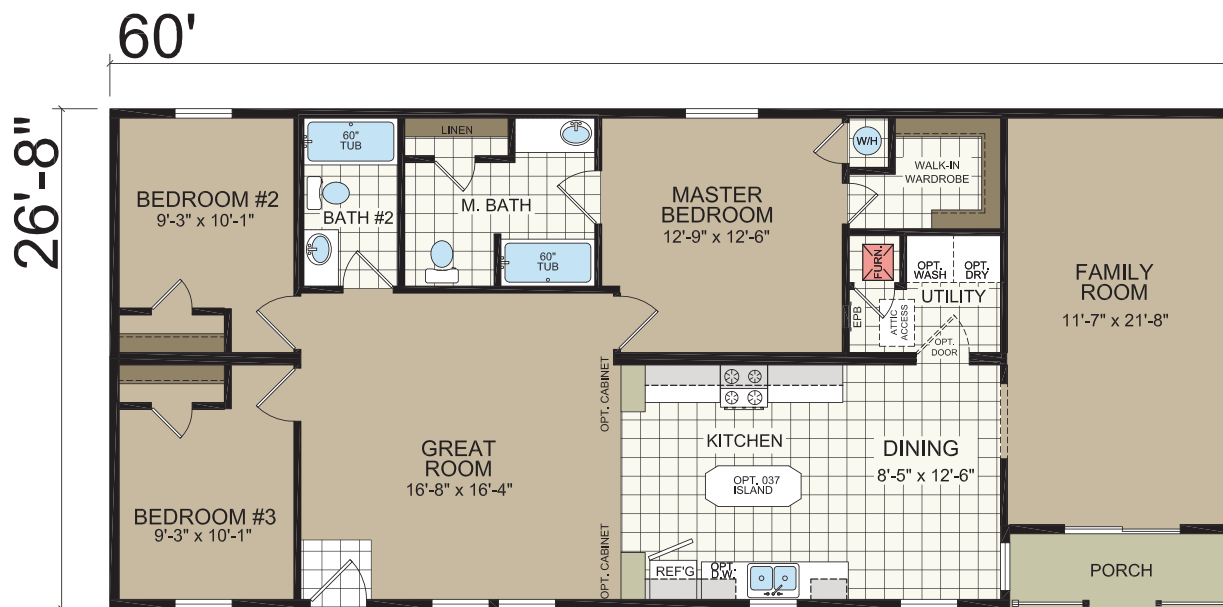
BRUTUS

2864-219

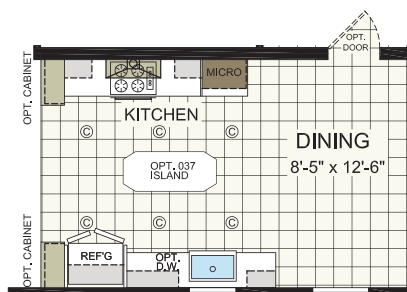
26'8" x 60' | 3 bed-2 bath | 1552 sq.ft.



Shown with Optional Elevation, Site-built Porch and Garage by Others



OPTIONAL SERENITY SHOWER



OPTIONAL ULTIMATE KITCHEN 2



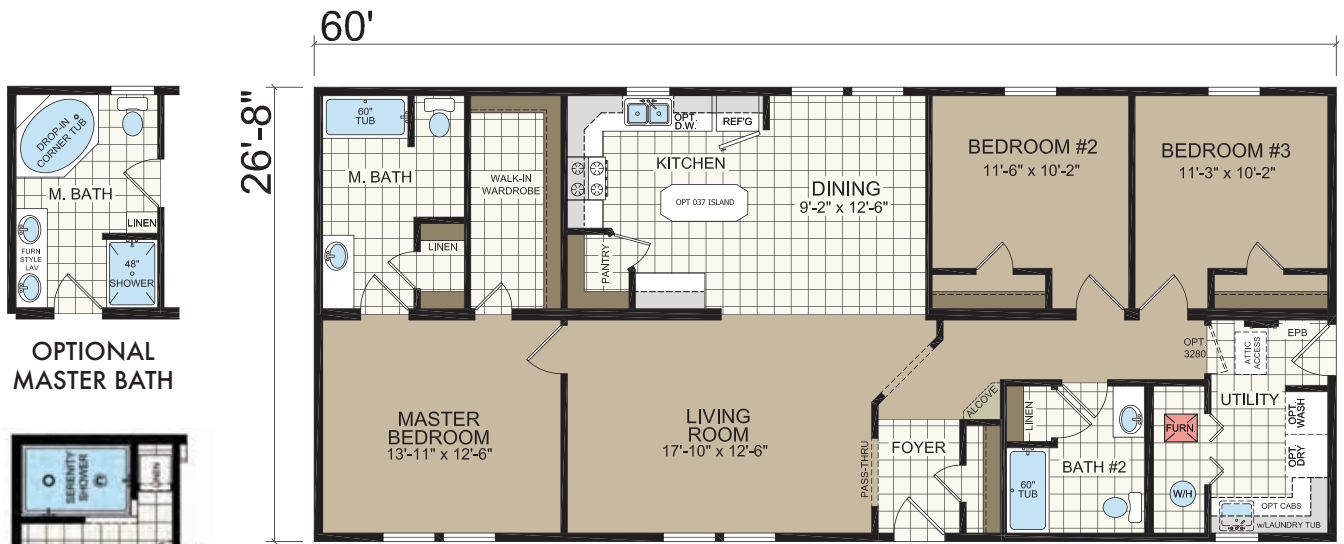
MYRTLE

2864-245

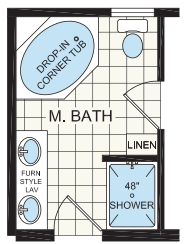
26'8" x 60' | 3 bed-2 bath | 1600 sq.ft.



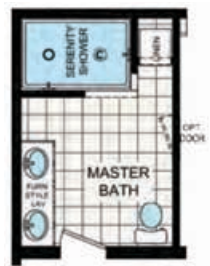
Shown with Optional Elevation, On-Site Porch and Garage by Other



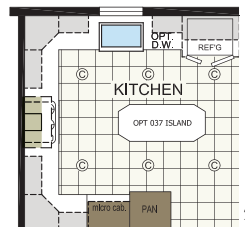
Window standard on Modular only



OPTIONAL MASTER BATH



OPTIONAL SERENITY SHOWER



OPTIONAL ULTIMATE KITCHEN 2



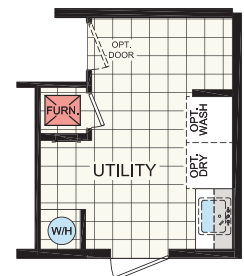
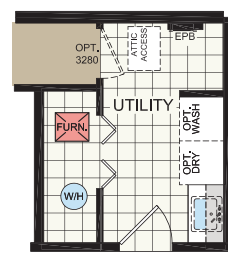
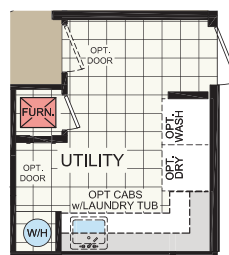
OPTIONAL STAIRWELL
Stairwell available on Modular only

Take a Virtual Tour!



OPTIONAL DOOR LOCATIONS

REQUIRES PATIO DOOR IN DINING ROOM
Utility layout options for Multi-Section only



OPT. UTILITY SINK
OPT. BASE/OH
OPTIONAL SINK

Attic access standard on Modular only

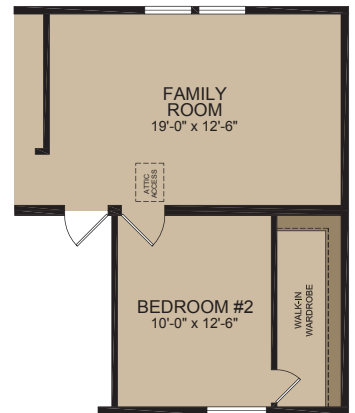
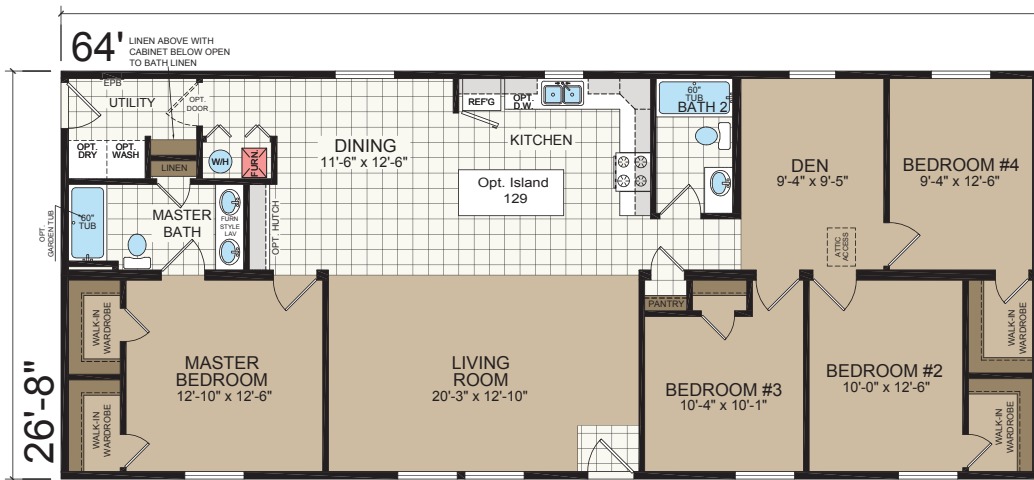
ALBERTA

2868-203

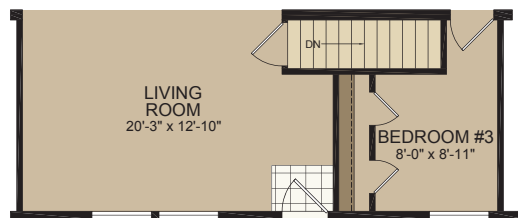
26'8" x 64' | 4 bed-2 bath | 1706 sq.ft.



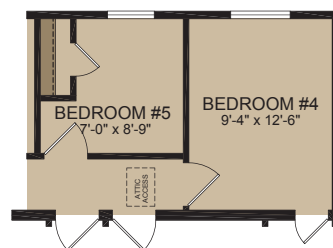
Shown with Optional Elevation, Site-built Porch and Garage by Others



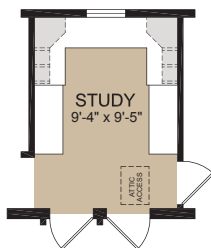
OPTIONAL FAMILY ROOM



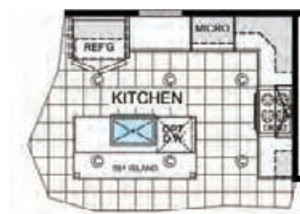
OPTIONAL STAIRWELL
Stairwell available on Modular only



OPTIONAL 5TH BEDROOM



OPTIONAL STUDY



OPTIONAL ULTIMATE KITCHEN 2

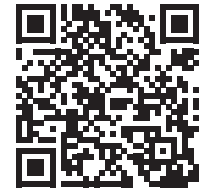
FILLMORE

2868-243

26'8" x 64' | 3 bed-2 bath | 1707 sq.ft.



Take a Virtual Tour!



OPTIONAL ULTIMATE KITCHEN 2



OPTIONAL MASTER BATH



OPTIONAL HALF BATH



OPTIONAL SERENITY BATH



OPTIONAL STAIRWELL
Stairwell available on Modular only



GEORGETOWN 2868-245

26'8" x 64' | 3 bed-2 bath | 1707 sq.ft.



Take a Virtual Tour!



OPTIONAL PORCH



OPTIONAL MASTER BATH



OPTIONAL ULTIMATE KITCHEN 2



OPTIONAL FAMILY ROOM OFFSET



OPTIONAL SERENITY BATH



OPTIONAL STAIRWELL

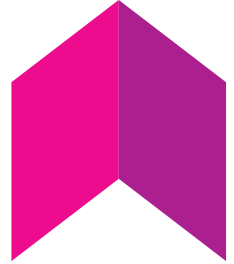
Stairwell available on Modular only

Attic access standard on Modular only

STAFFORD

2872-203

26'8" x 68' | 3 bed-2 bath | 1813 sq.ft.



OPTIONAL
LUXE SHOWER



OPTIONAL
MASTER BATH



OPTIONAL
SERENITY BATH



OPTIONAL ULTIMATE KITCHEN 2



OPTIONAL 4TH BEDROOM

Take a Virtual Tour!



OPTIONAL
ENTERTAINMENT
WALL
(PATIO DOOR
IS REQUIRED IN
DINING ROOM)



OPTIONAL STAIRWELL

Stairwell
available
on
Modular
only

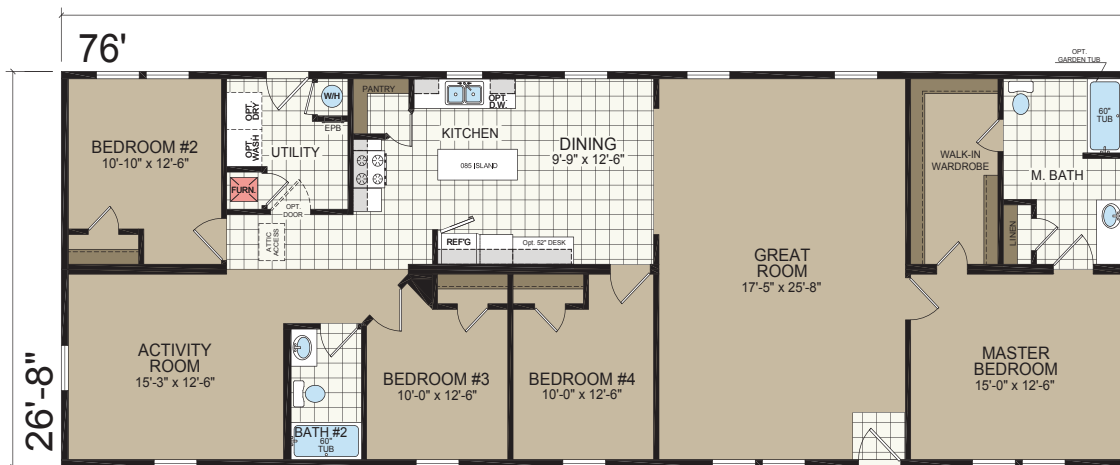
BALDWIN

2880-201

26'8" x 76' | 4 bed-2 bath | 2026 sq.ft.



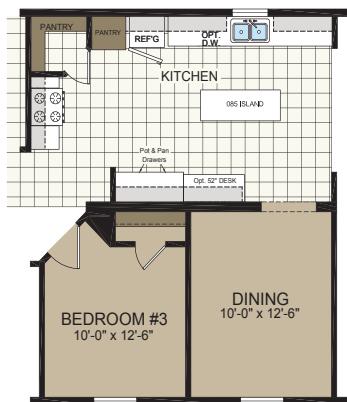
Shown with Optional Elevation, Site-built Porch and Garage by Others



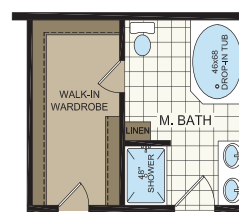
Two windows at great room and master bedroom standard on Modular only



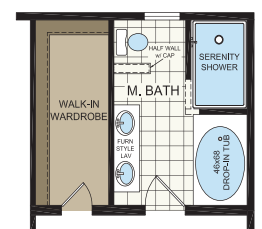
OPTIONAL ULTIMATE KITCHEN 2



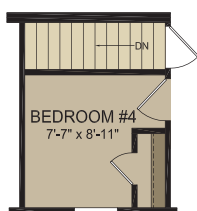
OPTIONAL KITCHEN w/ FORMAL DINING



OPTIONAL MASTER BATH

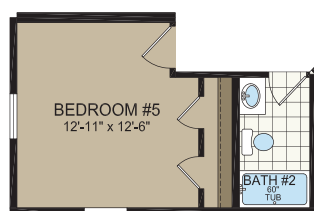


OPTIONAL SERENITY BATH

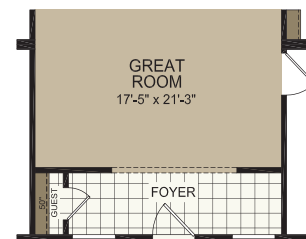


OPTIONAL STAIRWELL

Stairwell available on Modular only



OPTIONAL 5TH BEDROOM



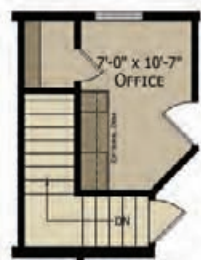
OPTIONAL FOYER

Attic access standard on Modular only

SHELBY

3264-215

30' x 60' | 3 bed-2 bath | 1824 sq.ft.



OPTIONAL STAIRWELL
(N/A w/ 4TH BEDROOM)
Stairwell available on Modular only



OPTIONAL 4TH BEDROOM
(N/A w/ STAIRWELL)



OPTIONAL DINING ROOM
(N/A w/ STAIRWELL)

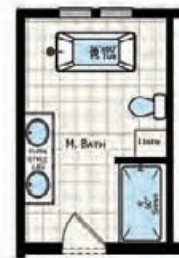


OPTIONAL ULTIMATE KITCHEN 2

Take a Virtual Tour!



OPTIONAL SERENITY BATH



OPTIONAL MASTER BATH



OPTIONAL END ENTRY



OPTIONAL END ENTRY



OPTIONAL 5TH BEDROOM

INDIAN

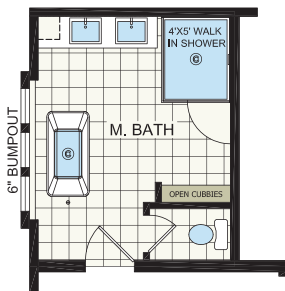
3268-217

30' x 64' | 4 bed-2 bath | 1920 sq.ft.

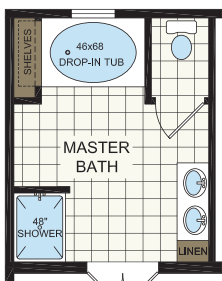


Shown with Optional Elevation, Site-Built Porch and Garage by Others

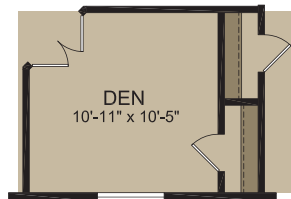
Bi-fold doors standard on Modular only



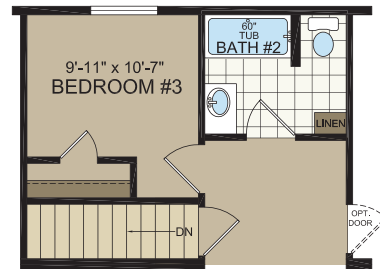
OPTIONAL RADIANT SPA BATH



OPTIONAL MASTER BATH



OPTIONAL DEN



OPTIONAL BASEMENT STAIRWELL
Stairwell available on Modular only

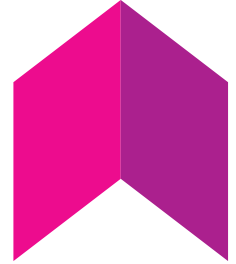


Attic access standard on Modular only

APOLLO

3276-201

30' x 72' | 4 bed-2 bath | 2160 sq.ft.



Bi-fold doors and 2 windows standard on Modular only



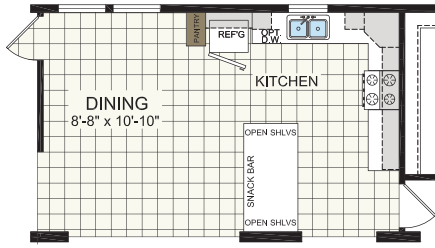
OPTIONAL END ENTRY

N/A with optional Theatre Room/Butlers Pantry

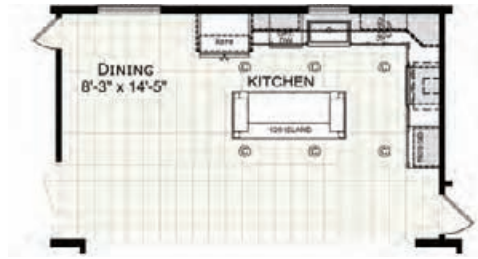
APOLLO OPTIONS ON NEXT PAGE



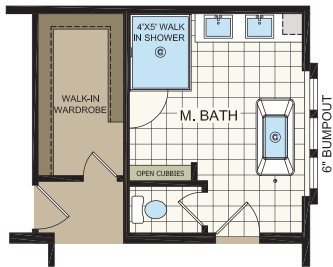
APOLLO 3276-201 OPTIONS CONTINUED



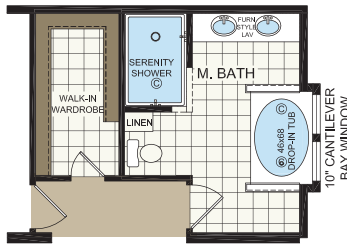
OPTIONAL KITCHEN



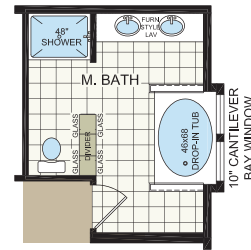
OPTIONAL ULTIMATE KITCHEN 2



OPTIONAL RADIANT SPA BATH



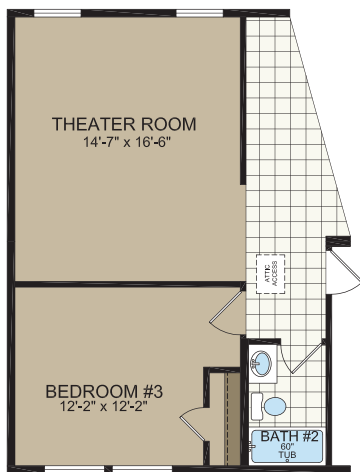
OPTIONAL SERENITY BATH



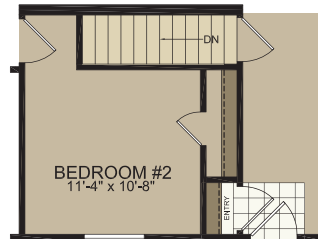
OPTIONAL MASTER BATH



OPTIONAL ENTERTAINMENT CENTER



OPTIONAL THEATER ROOM

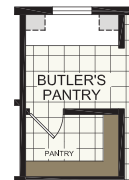


OPTIONAL STAIRWELL

Stairwell available on Modular only



OPTIONAL CLOSET ORGANIZER



OPTIONAL BUTLER'S PANTRY

WINSTON

3276-211

30' x 72' | 3 bed-2 bath | 2183 sq.ft.



OPTIONAL MASTER BATH



OPTIONAL MASTER BATH 2



OPTIONAL SERENITY BATH



OPTIONAL SERENITY BATH 2



OPTIONAL STAIRWELL
Stairwell available on Modular only



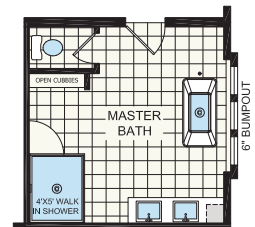
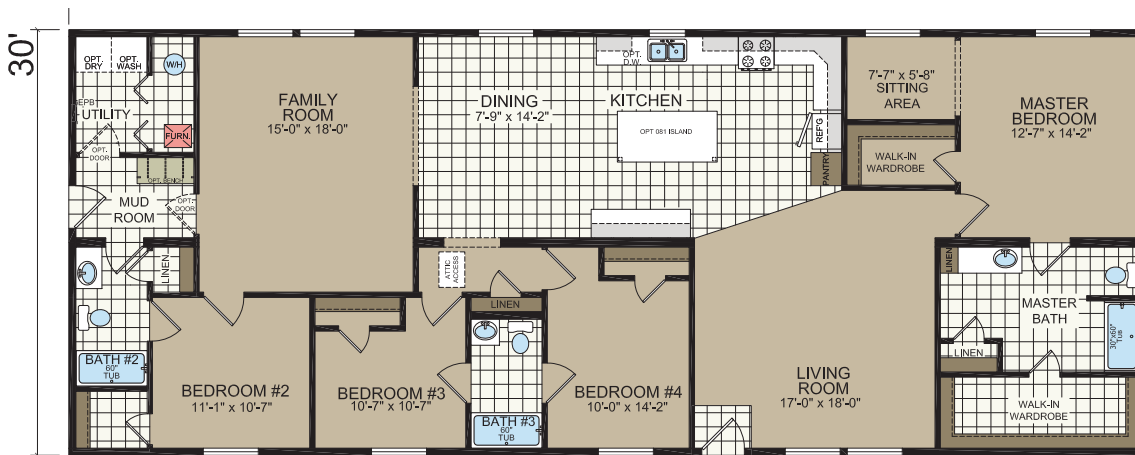
RED CEDAR

3280-217

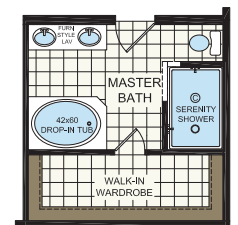
30' x 76' | 4 bed-2 bath | 2208 sq.ft.



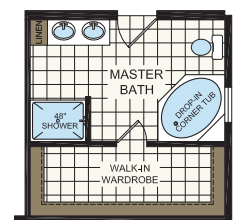
Shown with Optional Elevation, Site-Built Porch and Garage by Others



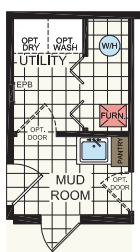
OPTIONAL RADIANT SPA BATH



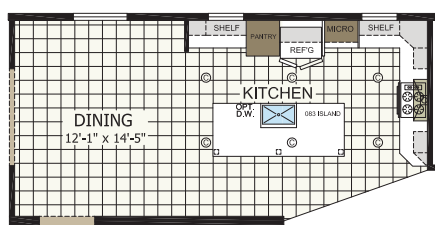
OPTIONAL SERENITY BATH



OPTIONAL MASTER BATH

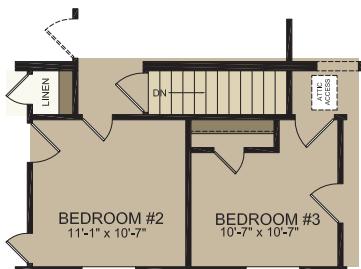


OPTIONAL UTILITY SINK

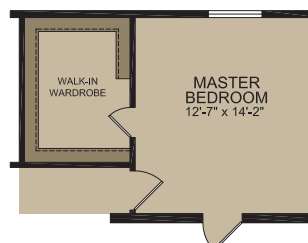


OPTIONAL ULTIMATE KITCHEN 2

Take a Virtual Tour!



OPTIONAL BASEMENT STAIRWELL
Stairwell available on Modular only



OPTIONAL WALK-IN WARDROBE



Attic access standard on Modular only

ODYSSEY 56' 2860-257

26'8"x 56' | 3 bed-2 bath | 1493 sq.ft.



FAMILY OF HOMES

Take a Virtual Tour!



ODYSSEY 60' 2864-255

26'8"x 60' | 3 bed-2 bath | 1600 sq.ft.



ODYSSEY 68'

2872-243

26'8" x 68' | 3 bed-2 bath | 1813 sq.ft.



FAMILY OF HOMES



ODYSSEY FAMILY OF HOMES OPTIONS



OPTIONAL FIREPLACE ENTERTAINMENT CENTER



OPTIONAL ODYSSEY KITCHEN



OPTIONAL MASTER BATH



OPTIONAL BATH 2

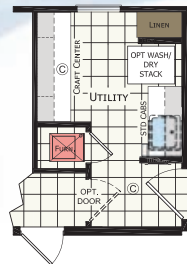
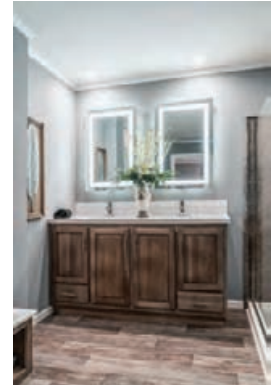


OPTIONAL STAIRWELL
Stairwell available on Modular only

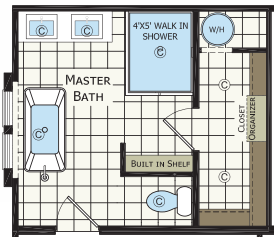
SUMMIT 56' 2860-237

26'8" x 56' | 3 bed-2 bath | 1493 sq.ft.

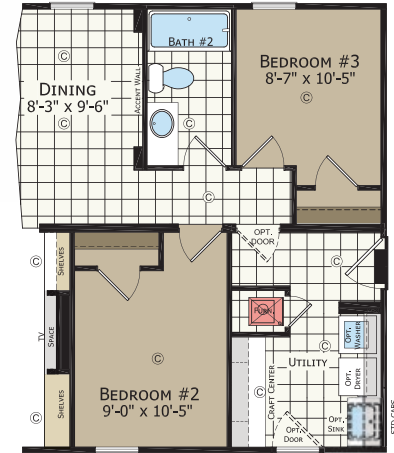
FAMILY OF HOMES



OPTIONAL UTILITY ROOM "B"



OPTIONAL MASTER BATH



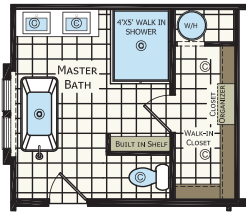
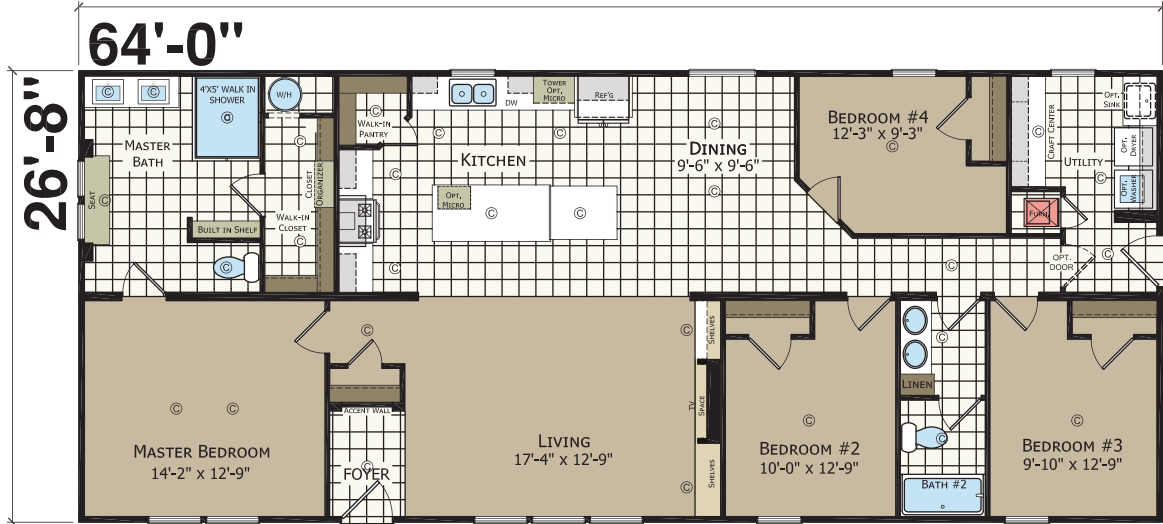
OPTIONAL FRONT ENTRY



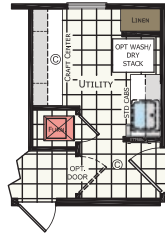
SUMMIT 64' 2868-237

26'8" x 64' | 4 bed-2 bath | 1706 sq.ft.

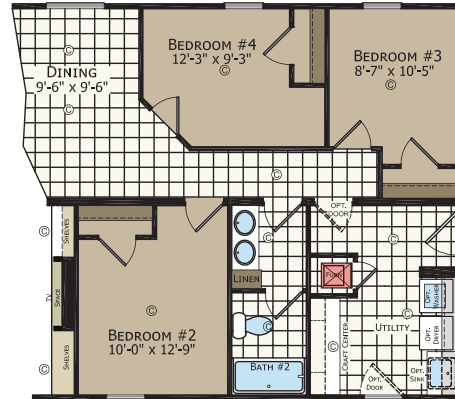
FAMILY OF HOMES



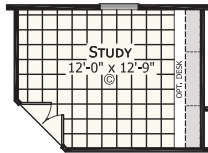
OPTIONAL MASTER BATH



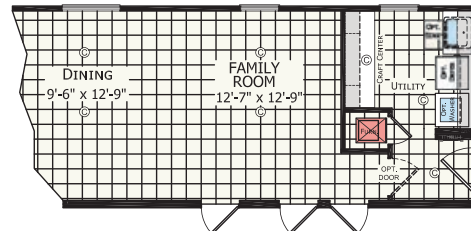
OPTIONAL UTILITY ROOM "B"



OPTIONAL FRONT ENTRY



OPTIONAL STUDY



OPTIONAL FAMILY ROOM



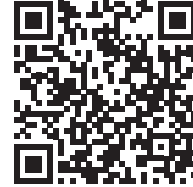
FENTON 60' 3264-217

30' x 60' | 3 bed-2 bath | 1820 sq.ft.

FAMILY
OF HOMES



Take a Virtual Tour!



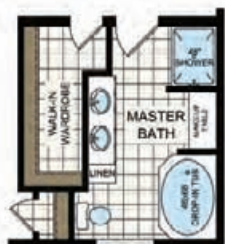
FENTON 68' 3272-215

30' x 68' | 3 bed-2 bath | 2062 sq.ft.

FAMILY OF HOMES



FENTON FAMILY OF HOMES OPTIONS



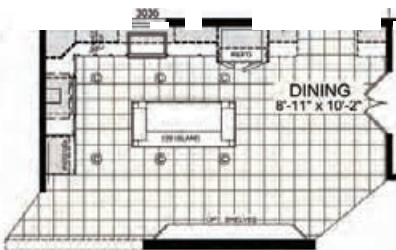
OPTIONAL MASTER BATH 1



OPTIONAL SERENITY BATH 2



OPTIONAL MASTER BATH 2
(SHOWN w/ OPTIONAL FIREPLACE
- N/A IN SOME STATES, SEE STATE REQ. SHEET)



OPTIONAL ULTIMATE KITCHEN 2



OPTIONAL DEN



OPTIONAL STAIRWELL
(NO FURNACE and WH INCLUDED)
Stairwell available on Modular only



OPTIONAL ELECTRIC FIREPLACE & HUTCH
(AVAILABLE w/ OPTIONAL MASTER BATH 3,
SERENITY 1 & RADIANT SPA)



308 Sheridan Drive
Topeka, IN 46571

www.Redmanhomesofindiana.com

CHAMPION®

HOME BUILDERS